

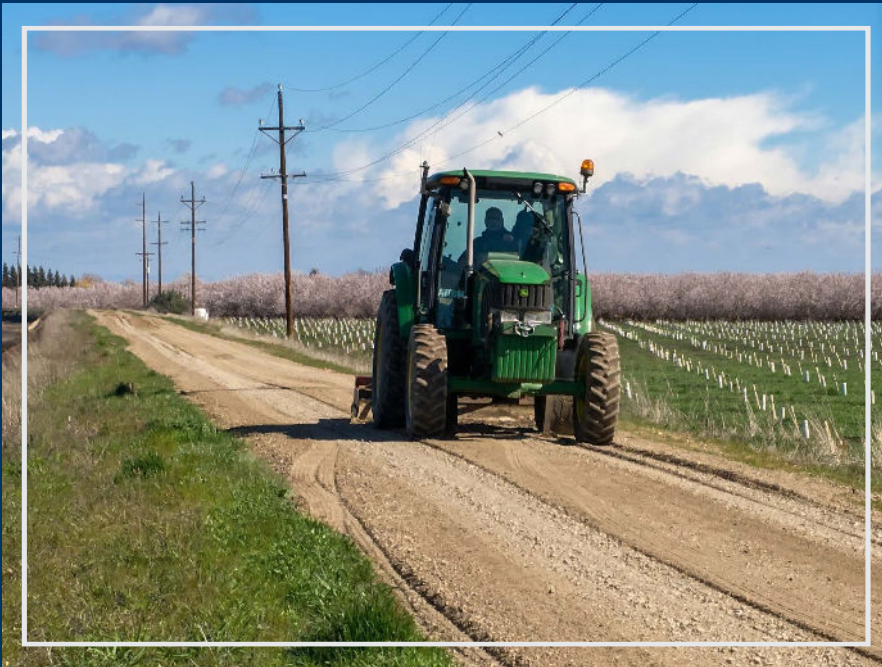
GCID



GLENN-COLUSA IRRIGATION DISTRICT

is seeking a

*Canal/Road Maintenance Worker -
Herbicide/Pesticide Spray Applicator*



The Position

Under general supervision, Herbicide/Pesticide Spray Applicator duties include but are not limited to terrestrial and aquatic weed management, vertebrate pest management, water quality monitoring efforts. Abatement/maintenance workers perform general labor work in the operation, maintenance, construction, and repair of District facilities and operate motor vehicles and other equipment.



The District

Glenn-Colusa Irrigation District (GCID) serves agricultural water needs within Glenn and Colusa counties in Northern California. Its primary water right was established in 1883, making it one of the oldest and largest water rights on the Sacramento River. The District was formally organized as the Glenn-Colusa Irrigation District in 1920.

GCID's core mission is to deliver a secure and reliable water supply to its landowners and water users, as efficiently and economically as possible, while preserving and protecting all resources.

Covering more than 175,000 acres, GCID is the largest agricultural district in the Sacramento Valley and one of the biggest in the state. GCID's main pump station, its only diversion from the Sacramento River, is located near Hamilton City. An extensive canal system, including a 65-mile main canal and more than 1,000 miles of laterals and drains, conveys the water to more than 1,200 water users, irrigating about 140,000 acres of farmland. GCID also serves 1,200 acres of private habitat land and more than 21,000 acres of protected federal wildlife refuges.



Essential Functions and Responsibilities



Assists with a variety of herbicide and pesticide applications and construction work on District facilities.



Operates a variety of hand and power tools to perform routine maintenance work, including chainsaws, pole saw, and related tools and equipment.



Performs brush clearing, weeding, and basic landscape maintenance. Load and unload materials and equipment.



Occasionally performs a variety of semiskilled and skilled maintenance functions, including painting, carpentry, welding, and plumbing work.



Performs duties related to the District's aquatic weed abatement/pest management program, Read and interpret pesticide and herbicide application laws, rules and regulations.



Establish and maintain cooperative working relationships with co-workers, outside agencies and the public.



Perform various related duties and responsibilities as required. See job description for full details.



Job Standards/Specifications

Knowledge of:

- ✓ Equipment and tools used in maintaining District facilities.
- ✓ Occupational hazards and safety standards and practices.
- ✓ Safety related issues with chemicals and hazardous materials used in the abatement program.



Other Duties



Learn methods and techniques related to application of aquatic and terrestrial weed abatement materials and rodent control materials.



Practice established safety techniques related to abatement procedures.



Ability to use office equipment, computer-laptop, tablet and copier.



Communicate clearly and concisely, both orally and in writing.

Experience & Training

Any combination of education and experience that provides the necessary knowledge and abilities such as:

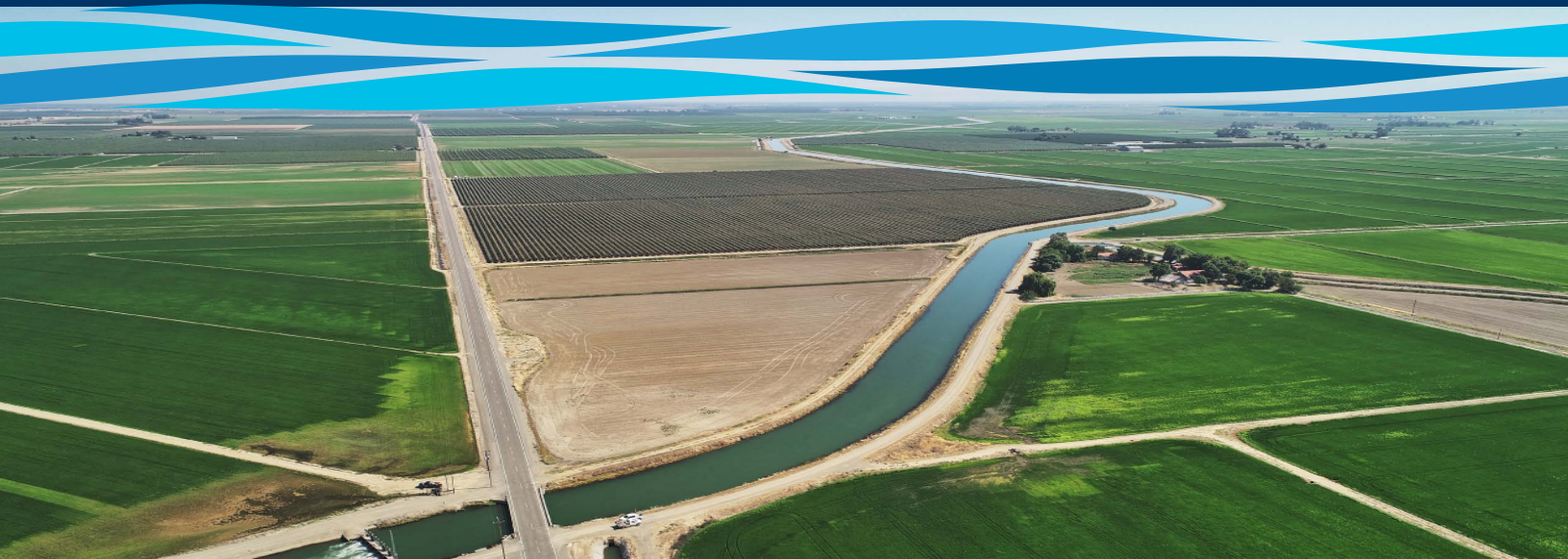


One or more years of experience performing spray application in the treatment of terrestrial and aquatic weed management and field maintenance related to maintaining canals and laterals is desirable.

Environmental Factors



.Exposure to the sun: 50% to 100% work time spent outside a building and exposed to the sun. High temperatures, high humidity, and irregular or extended work hours occasionally required to change working hours or work overtime.





License, Certificate, Registration Requirement

Possession of a valid California Class C driver's license is required at the time of appointment.

Desirable Qualifications

Agricultural background desired but not required.



Compensation, Benefits, Career & Culture

In addition to health and compensation benefits, GCID provides career-related assistance such as professional coaching, ongoing training and industry networking opportunities.

- ✓ Health, Dental and Vision (*Employee and family coverage*)
- ✓ Life Insurance
- ✓ State Disability Insurance and Long-term Disability Insurance
- ✓ Holidays – 12 per year
- ✓ Annual Leave Policy (*20-32 days, depending on length of employment*)
- ✓ Defined Contribution Pension Plan (*District contributes 10% of employee's annual salary*)
- ✓ Social Security Benefits
- ✓ Deferred Compensation Plan
- ✓ Section 125 Cafeteria Plan

Salary Range:

\$47,143 - \$66,336



GCID

344 East Laurel Street, Willows, CA 95988
(530) 934-8881 | www.gcid.net



Application Process & Recruitment Schedule

To learn more about GCID, visit our website at www.gcid.net.

Please submit a cover letter, resume and application to our office at P.O. Box 150, Willows, California, 95988; or on our website at www.gcid.net/employment.

Closing date March 16, 2026